



RFI™ Case Studies

These samples of RFI™ images and interpretations have been sent to ITEM directly from the Licensed RFI™ Investigator who conducted the RFI™ readings. ITEM does not take responsibility for these assessments, and no medical claims are implied. This information is offered as examples of how people use RFI™.

Case Study 1 – Louise

Contributed by Heather Carlini, CMH

Louise, a 58-year old woman in Canada, was recently diagnosed with Chronic Fatigue Syndrome (CFS). Her condition resulted from extreme anxiety due to her job. Heather Carlini, CMH, came to know Louise and recommended a 12-week therapy program involving hypnotherapy (to regress to the onset of the condition and confront it) and sound therapy (to promote cellular release of “negative” energies).

Below is Louise’s baseline reading for **RFI™** at the beginning of her therapy. It is a prime example of what CFS subjects’ energy fields look like due to stress. Notes on this **RFI™** reading:

- On the left side on the Psychological Level the measurements reveal black in two areas. On the health level black is shown, and the Sacral Chakra also has black as its predominant color. This appears to indicate a “tear” in the energy field. Louise had an operation for endometriosis a year ago. The aura indicates that she may have problems with endometriosis again, or has not fully recovered. The Sacral Chakra’s black color appears to indicate a blockage of emotional expression. I requested that Louise visit a doctor, which she did; the doctor revealed that Louise will have to go through another operation. The **RFI™** reading provided feedback on this problem even though she was not aware of it.
- Louise has problems with her left hip and her balance; the color black appears in this area.
- Note the red in the Psychological Level above both arms, and burgundy at both wrists. She is harboring stress in her upper body, particularly her arms. Her doctor confirmed that she has carpal tunnel syndrome.
- Note on the right side of the brain, it shows black energy again, which could be revealing the intense emotional pain that Louise is suffering through her job. She also had a migraine headache at the time the reading was taken.



Louise – May 2004, Before Hypnotherapy and Sound Therapy

Below is Louise's final reading for **RFI™** at the end of her therapy. Notice that the aura field is almost entirely orchid and purple, indicating a harmonic association between mind and body. This is a very healthy energy field. Notice that all areas of red, burgundy and black have been replaced with "softer" colors, such as orchid (spiritual focus), purple (psychosomatic connection), gold (healing), orange (healing) and blue (communication).



Louise – August 2004, Following 12 Consecutive Weeks of Therapy

Case Study 2 – Robert

Contributed by Irene Kormoci

Robert is a 6 year-old boy who was recommended to me by a trance channel, Lyn, who had been approached by Robert's mother. Seemingly Robert has been having dreadful nightmares and the mother was very concerned. Robert was at school so I took down his date of birth to have a look at the birth chart and the numbers before he returned for the **RFI™** reading.

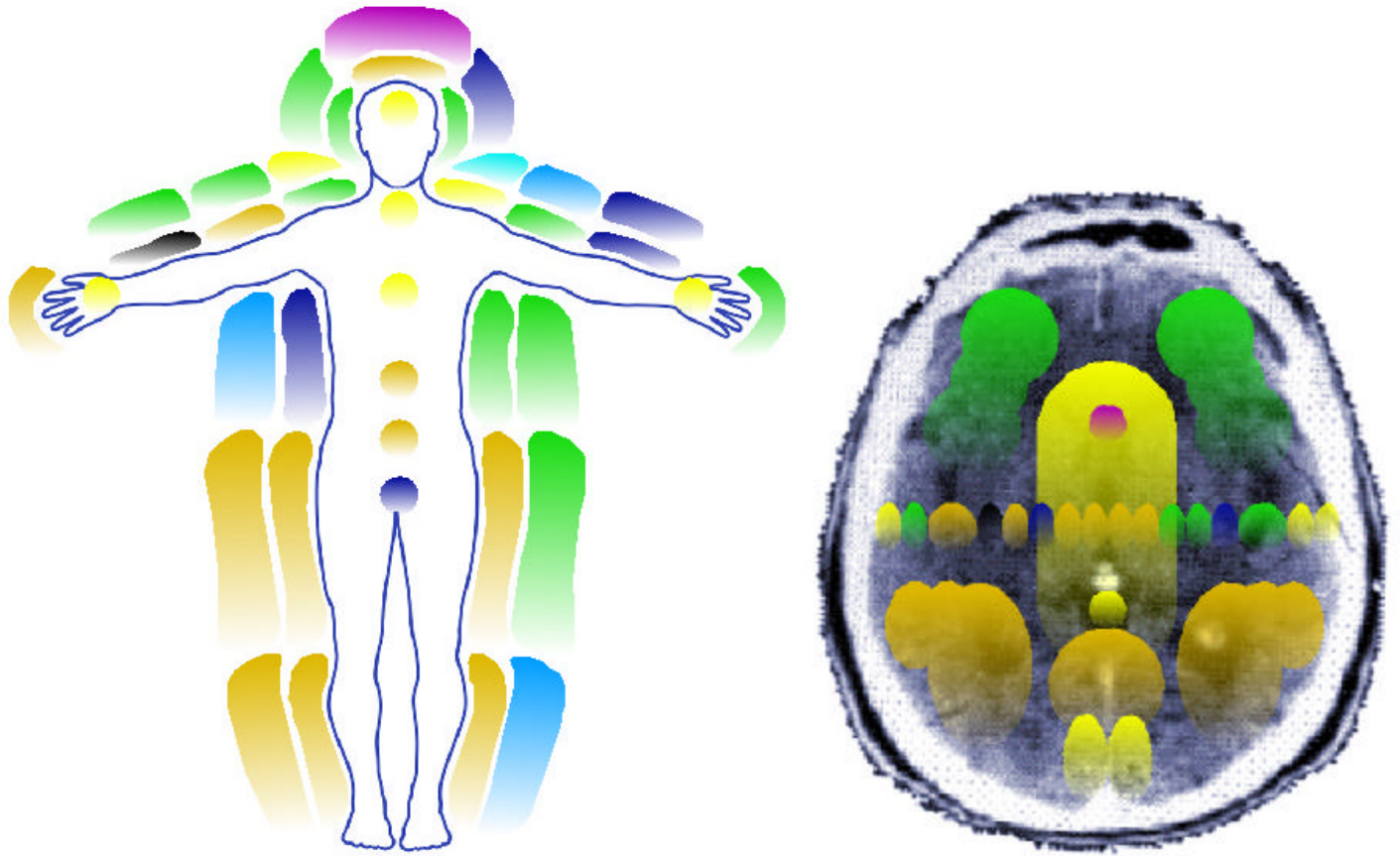
Before Robert arrived I had a chance to look at his numbers and chart. It was very easy to see what was happening. Robert was born the day before me (not the year, obviously) and had a very similar birth grid to mine, he had one less 1 than me, that's all. So immediately I knew what I was dealing with. His astrological birth chart was similar in that he had a stellium of planets in the 4th House, he had a Leo Ascendant and a Taurus Mid-Heaven, so I felt I knew this little boy before he arrived.

Robert arrived with his Mum and sister and was as I expected, a soft, shy sensitive person. However, his curiosity got the better of him and so I positioned him where he could see the colours come up on the screen as I scanned him and before I had finished he was asking what certain colours meant.

First thing I noticed was lack of Pink or Orchid. Heaps of Gold and heaps of Green. Navy around the head, Blue and Cyan impacting on him. Purple and Gold filtering in through the Crown.

I was not seeing a traumatized boy. In fact I was faced with a boy who was very curious, playful, bright and sensitive. Even though there is a lot of Green on the Left side I do not see this as trauma. I see it more as love and care around him and the Green on the Right side is the love that he gives out. His Mum said he is a very loving child. I asked the Mum about the nightmares and she looked horrified and shook her head. She then suggested that Robert and his sister might like to go and look at some of the other exhibits.

It seems that Robert has no recollection of these nightmares, however, she is horrified by it all. On further questioning she revealed that there is so much terror in his eyes while it's happening. I suggested that there was no recollection on a conscious level and that he is not being disturbed by what is occurring. I did make suggestion that he was being impacted on a mental level with lots of creative ideas and that he had a lot of spiritual protection around him. I focused on the amount of Gold in his Aura and the amount of positive energy (Yellow) that he was carrying around with him. She seems quite happy about this and was more relaxed about the lack of trauma.



Robert – May 2003

Case Study 3 – Denise

Contributed by Rhonda Noble

Last night I took the scanner with me to my Inner Qi Gong class. The class lasts 2 hrs and it is all about channeling/sending your energy where you want it to go via breathing. I only had time to scan my friend Denise's head, chakras and hands before and after class. LOOK AT THE DIFFERENCE before and after class! FYI, she has just finished radiation treatment for breast cancer. I only had the analysis chart with me so I just wrote the frequencies down as I scanned. The numbers correspond to the numbers/places on the body as they appeared on the chart. Here they are:

Region	Before Qi Gong Class	After Qi Gong Class
Left Hand, Psych. Level	688.6 MHz	6.7 MHz
Top of Head, Health Level	706.3 MHz	7.0 MHz
Right Hand, Psych. Level	642.3 MHz	8.3 MHz
Base Chakra	697.6 MHz	5.9 MHz
Sacral Chakra	652 MHz	6.8 MHz
Solar Plexus Chakra	684.5 MHz	8.4 MHz
Heart Chakra	685.1 MHz	9.3 MHz
Throat Chakra	599.9 MHz	6.5 MHz
Third Eye Chakra	626.1 MHz	9.2 MHz
Crown Chakra	704.8 MHz	11.1 MHz

Below are the aura images, before (left) and after (right) the Qi Gong class. Notice that before class her key aura centers are primarily blue and navy, indicating that lots of communication was occurring (very true). After class, notice that there is a great diversity in the colors, and the Crown Chakra turned to a purple color, revealing significant psychic energy. The red at the left hand seems to indicate the “grounding” energies being received by the group.

