

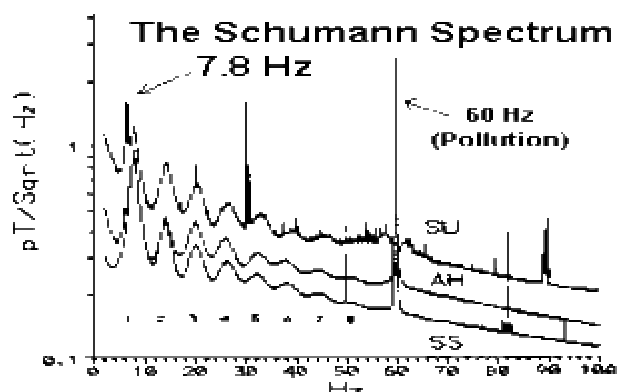


EARTHSafe TUNABLE SCHUMANN DEVICE

What is Schumann Resonance?



Schumann Resonances are quasi-standing electromagnetic waves that exist in the Earth's 'electromagnetic' cavity (the space between the surface of the Earth and the ionosphere). Like waves on a string, they are not present all the time, but have to be "excited" to be observed. They are not caused by anything internal to the Earth, its crust or its core. They seem to be related to electrical activity in the atmosphere, particularly during times of intense lightning activity. They occur at several frequencies, specifically 7.8 (strongest), 14, 20, 26, 33, 39 and 45 (weakest) Hertz, with a daily variation of about ± 0.5 Hertz. So long as the properties of Earth's electromagnetic cavity remains about the same, these frequencies remain the same. Presumably there is some change due to the solar sunspot cycle as the Earth's ionosphere changes in response to the 11-year cycle of solar activity. The resonant properties of this terrestrial cavity were first predicted by the German physicist W. O. Schumann between 1952 and 1957, and first detected in 1954.



Depending on your point of view, living beings either evolved in this natural electromagnetic environment or were created with Divine Intelligence to live in harmony with it. One thing is certain: *Since life began, the Earth has been surrounding all living things with this natural frequency pulsation.* Many experts believe that the wide spectrum of artificial man-made EMF radiation masks the natural beneficial frequency of the Earth. Electropollution may cause us to feel more stressed, fatigued and "out of balance." Laboratory research has shown that exposing living cells to the Schumann Resonance had the effect of "protecting" them from ambient EMFs, allowing the cells to increase their immune protection, and decrease the absorption of depression-inducing chemicals. Some researchers believe that by producing a 7.83 Hz pulse with a field generator (Schumann device), we can counter the effects of the irritating man-made fields. By replicating the Earth's natural rhythm, we may be providing ourselves (at least in our immediate vicinity) with a more healthy environment.



EarthSafe is the only TUNABLE Schumann Resonance Device!

We know that our bodies are very delicate electromagnetic senders and receivers. And each of us is different, even unique, in the ways in which our bodies interact with the electromagnetic environment. By creating a Schumann device with a variable capacitor, the EarthSafe has the unique ability to be tuned from about **2 Hz** to over **20 Hz**, to produce the exact frequency that will give maximum benefit to *your* specific body. And it can be re-adjusted in seconds at any time, for any new circumstance, *including the changes taking place in the Earth's natural field*. You may notice a difference immediately. Some people have said that it feels as though an invisible weight has been lifted off their shoulders.

Irritability, eyestrain, and general fatigue from using electrical appliances can be reduced. Pocket sized (5-1/4" x 2-3/4" x 1"), lightweight (only 6 oz.), it goes with you wherever you go. Amazing 6-foot radius of effectiveness! Tuning is easily done with simple muscle testing. Tune up your protective energy field with EarthSafe. 9V battery included, made in USA. Also available is the EarthSafe "whole house" model, with the capability of generating fields that can extend throughout an average sized home.

Disclaimer:

The EarthSafe device is not intended for the diagnosis, cure, mitigation or treatment of any disease nor any other medical condition, and are not intended to affect the structure or any biological function of the body.