

Equus College of Learning & Research



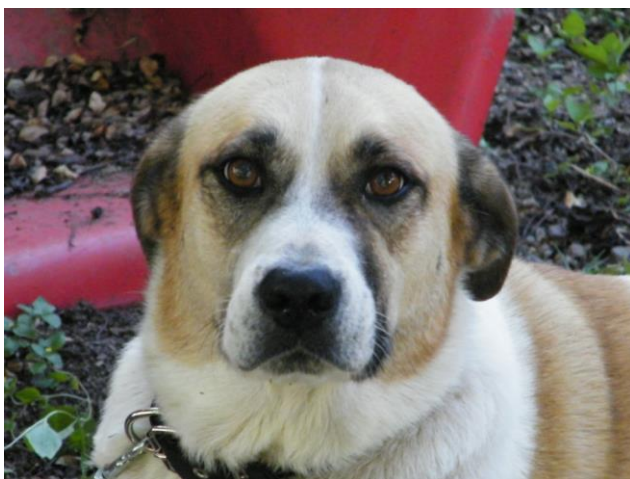
BOWTECH
the Original Bowen on Horses Technique

Page | 1

The Animal Arm of the Bowen Therapy Academy of Australia is the Equus College of Learning & Research

ECL&R trains practitioners both for animal, and human therapies; this year saw the introduction the Research program within the Post Graduate course for bridging Large animals Equine Muscle Release Therapy EMRT® to small animals Cat & Canine CCmrt®

Recently we had a 6 day class and with qualified EMRT® practitioners at hand; we used this wonderful opportunity to document the changes with the Equus College Research Equipment to show the changes in the animals



Research case 1 BEAUTY

3 YO Maramma x Cattle dog x German shepherd, her job is to protect calves and foals from wild dogs and Dingoes, her personality is that of the Maramma – they are a little human shy and work to the beat of their own drum , in other words their innate instinct to protect the herd and make their own choices in protection is higher than their need to please a human, this makes them quite challenging to train.

CCmrt® non – invasive assessments

When Beauty was visually and palpably assessed she showed hot and cold spots, her ROM in the shoulders was restricted and there was a palpable swelling around the thyroid area of her neck. She had had an injury ... [2 weeks old dog bite] to the medial pad of her left paw, and was slightly favouring this in her movement , both with her injured paw and compensatory leg. Her musculature showed the body restrictions associated with this type of injury

Above;-Karina and Nash work on a Beauty with CCmrt® left ;-Beauty having her Vet Obs taken prior to CCmrt® Treatment with Lynley NZ, Karina, Nash and Dr Raquel DVM - Australia



EQUUS COLLEGE RESEARCH IS BASED ON

1 -

Equus College of Learning & Research

New Energy Vision

NEV - British biologist Dr Harry Oldfield became an energy field researcher after becoming interested in the effects of kirlian photography on plants. Kirlian photography developed by the Russians in the 1950's would show the blue print of the plant as a whole structure even though the plant may have been cut in half. By the 1980's Oldfield had developed the **Polycontrast Interference Photography [PIP]** imaging system, by the early 2000's he had perfected his system and renamed it **NEV New Energy Vision**. The filters of this system split light into different components which are seen in multiple colours which can yield extraordinary images otherwise invisible to the eye. Images with PIP and NEV are found to track the energy outputs of 2 important health care systems the **Chakras system of Ayurvedic medicine [India]** and the **Meridians of Traditional Chinese Medicine [China]**. © NEXUS MAG 2008 Our work includes the energy field and encompasses TCM and other energy health modalities pertinent to Bowen made PIP of great interest to me.

Page | 2

It was on the recommendation of EMRT® practitioner & Veterinarian Dr. Raquel Stoll that using this system of quantifying recorded responses as a research tool for both EMRT® and CCmrt® along with the fact that she could perform this in a clinical Veterinary situation allowed the acquisition of the new NEV system and its implementation into our research work a reality.

During our class we recorded the dogs on day 1 and day 6, even though they were overloaded having had the equivalent of 3 treatments in a 6 day period the results of the research was outstanding



Research case Beauty

In the first NEV image Pre CCmrt® treatment the energy lines on her and emanating from her are distorted; whereas post Rx day 6 her energies are emanating in calm even circles and her body is showing less



distortion and leakage through the meridians.

EQUUS COLLEGE RESEARCH IS BASED ON

2 RESONANT Field Imaging RFI

Measuring the Electric Body, Science and Theory:-

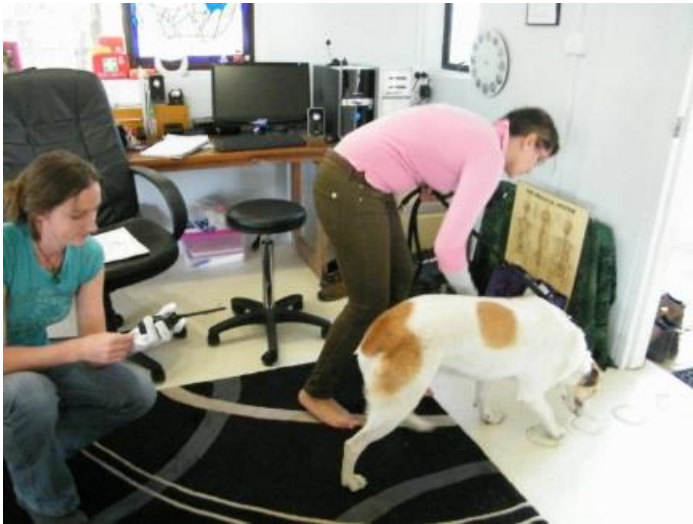
This research uses a Digital Frequency Counter, which provides information into a specifically designed piece of software. RFI™, and the presumption of the existence of the Aura, is based upon the principle that all mental activity is electromagnetic.

Neurotransmitters are created only when electrical impulses induce a voltage in a neuron which exceeds its firing threshold. In addition, EEG (electroencephalogram) technology shows that mental activity can be effectively analyzed and monitored entirely by electromagnetic principles

In electrical engineering, it is an established principle that all electrical currents produce surrounding electromagnetic (EM) fields. Accordingly, our psychological and emotional activities are sent throughout the body as electrical impulses, radiating electromagnetic fields outside the body, which are characteristic of the mental activity that generated them. Indeed, even the mere movement of atoms will produce a quantifiable electromagnetic field.

According to the above biophysics, information about the "health" status of a complex organism is available from the coordination of sub-cellular energies, much the same as in a prokaryote. Any decrease in homeostasis, including parasitic infection, genetic mutation, arterial constriction, etc., will produce a corresponding modification in the bioelectrical field. ©ITEM 2011

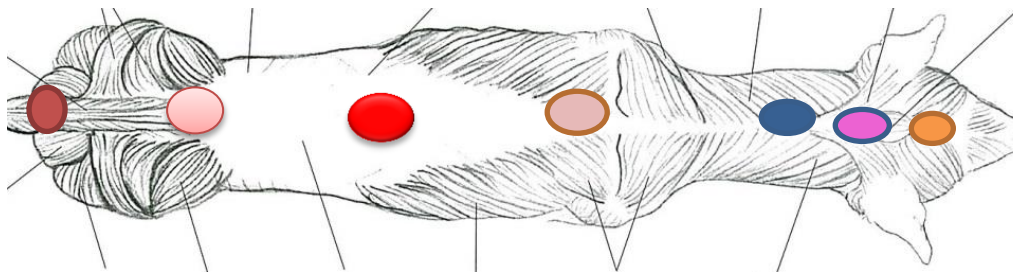
RFI™ is an initial attempt to quantify and objectively interpret such modifications. We use this only to measure the chakras pre and post CCmrt® sessions. the chakras are aligned to the major endocrine glands of the body therefore can be invaluable not only in metaphysical health but also in physiological health



RFI measurements Karina and Nash measuring the frequencies of the charkas - each colour emitted in the EM field surrounding the body in the chakra has a definite meaning both physiologically and psychologically for the body which is documented throughout the research, this then used in conjunction with the other 'tools' of research plus our CCmrt® Assessments observation and treatments can create a dynamic holistic view of the animal and its changes

Page | 3

Beauty day 1 day 1



Chakra Bioenergy Analysis - Characteristics

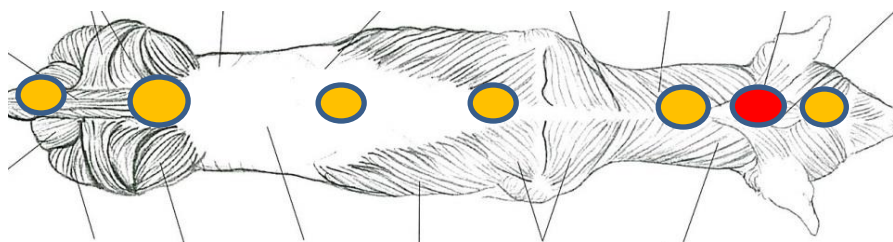
The Chakras are bioenergy vortexes located at fixed points along the spinal column, which radiate energy-information related to the activity of corresponding endocrine glands. In accordance with the known functions of the endocrine glands, each Chakra represents a category, or sphere, of the subject's life. The color of bioenergy found in each Chakra reveals events and conditions in that category of the being's life. ©ITEM 2011

1. The colour **Burgundy** (related to instincts, needs and desires) in the **Base Chakra** means that the dog identify most with basic instinctual patterning of needs and desires. There could be changes and as starting to accept modifications in behaviour
2. The colour **Orchid** (related to truth and spirituality) in the **Sacral Chakra** means that the dog obtains healing through their innate being-ness as a spiritual entity or not connected to earthly dog behaviour.
3. The colour **Red** (related to material and physical focus) in the **Solar Plexus Chakra** means that the satisfaction of material or physical needs or desires generally has the most influence over the way the dog handles stress, which relates to their state of mind. – being a dog that works primarily from earthly dog instinctual needs
4. The colour **Rose** (related to love from human and other animals and sensitivity) in the **Heart Chakra** means that emotions are generally channeled through the how the dog is treated by humans
5. The colour **Navy** (related to leadership and intelligence) in the **Throat Chakra** means that the dog can exert intelligence, leadership and control over situations through communication skills. Either passive, submissive or aggressive
6. The colour **Rose** (related to love from human and other animals and sensitivity) in the **Third Eye Chakra** means that mental and spiritually intuitive capacities are focused primarily on how the dog is treated by humans both through physical touch and physiological behaviour – this extends to how he is treated by other animals both tactile and psychological
7. The colour **Orange** (related to emotional healing) in the **Crown Chakra** means that the dog's highest purpose and predominant spiritual priorities involve the experience of emotional healing.

The Chakras are bioenergy vortexes located at fixed points along the spinal column, which radiate energy-information related to the activity of corresponding endocrine glands. Accordingly, they indicate which bioenergies are currently emanating from, influencing, or acting upon the corresponding endocrine glands.
©ITEM 2011

1. The **Base Chakra**, located in the genital area, is related to the bioenergy information in the **Ovaries and Testes**.
Burgundy - Increased biological activity in the form of growth, regrowth or regeneration. Generally healthy.
2. The **Sacral Chakra**, located above the genital area just below the navel, is related to bioenergy in the **Adrenal Medulla**, which stimulates the immune system with the adrenocorticotrophic hormone.
Orchid - There is a clear and direct Mind-Body connection to the area of this bioenergy. The dog has a positive and pleasant psychological association with the part of the body where this bioenergy is located. Events, actions, and therapies involving this area are highly likely to have a significant psychological impact upon the dog. Also indicates that mental activity is currently influencing and controlling biological activity and physical health in this area. Generally healthy.
3. The **Solar Plexus Chakra**, located around the navel, is related to the bioenergy in the **Islet of the Pancreas**, which stimulates the nervous system with insulin.
Red - Biological malfunction or physical damage. May also indicate a pain response or pain sensation in the area of the bioenergy, with or without actual malfunction or damage. Generally unhealthy.
4. The **Heart Chakra**, located at the centre of the chest in the heart area, is related to bioenergy in the **Adrenal Cortex** and the **Thyroid**, which stimulates biological manifestations of emotion with thyroxin, and the **Anterior Pituitary**, which triggers hormone secretion in the whole endocrine system.
Rose - Sensory stimulus is currently acting upon the affected area. Related to sensual and physical body experiences, physical comfort and enjoyable sensations of the body. Generally healthy.
5. The **Throat Chakra**, located at the centre of the throat, is related to bioenergy in the **Thyroid and Parathyroid** glands.
Navy - Increased biological activity. Could be current functioning of metabolic systems, or certain organs or circulatory systems currently exerting extra effort. Generally healthy, unless this bioenergy appears in the same area for extended periods of time. (NB this is where beauty had swelling)
6. The **Third Eye Chakra**, located on the centre of the forehead between the eyebrows, is related to bioenergy in the **Pineal Body** of the brain, both an electromagnetic sensory organ and a gland which produces melatonin.
Rose - Sensory stimulus is currently acting upon the affected area. Related to sensual and physical body experiences, physical comfort and enjoyable sensations of the body. Generally healthy.
7. The **Crown Chakra**, located directly above the head, is related to bioenergy in the **Anterior Pituitary** gland, which controls the endocrine system.
Orange - Healing energy is currently acting upon the affected area. Immune system activity, and recovery. Generally unhealthy at the moment, but positive prognosis, and making progress towards becoming healthy.

RFI measurements Beauty day 6 after being treated at the intensive CCmrt® learning course



Chakra Bioenergy Analysis – beauty day 6

Equus College of Learning & Research

1. The colour **Gold** (related to abundant healing) in the **Base Chakra** means that the deepest identity is being a spiritual healer, and that the focus is on making connections between the physical and spiritual realms. The strong healing energies the dog transmit make her a natural leader and peacekeeper.
2. The colour **Gold** (related to abundant healing) in the **Sacral Chakra** means that there is a concentration of healing energies within the dog at this time, possibly in response to countering a physiological or emotional health concern or others projecting healing energies toward the dog.
3. The colour **Gold** (related to abundant healing) in the **Solar Plexus Chakra** means that the dog is accumulating abundant healing energies in order to deal with stresses in her life.
4. The colour **Gold** (related to abundant healing) in the **Heart Chakra** means that the dog's emotions are strongly focused on healing themselves and others.
5. The colour **Gold** (related to abundant healing) in the **Throat Chakra** means that your communication skills are strongly focused on the healing of yourself and others.
6. The colour **Red** (related to material and physical focus) in the **Third Eye Chakra** means that the mental and psychic capacities are focused primarily on material and physical desires. This may also indicate an imbalanced or unstable flow of mental energies in the brain.
7. The colour **Gold** (related to abundant healing) in the **Crown Chakra** means that the dog's highest purpose and predominant spiritual priorities involve the experience of healing and nurturing the dog and others.

Page | 5

Endocrine System Analysis – Beauty Day 6

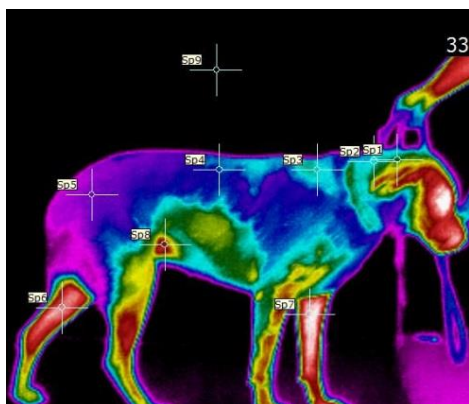
1. The **Base Chakra**, located in the genital area, is related to the bioenergy information in the **Ovaries and Testes**.
Gold - Healing energy is emanating from an area which is already vital and healthy. This excess of healing energy projects outward to contribute healthy and healing energy to the environment, and other animals and people, plants and objects which come in contact with this bioenergy.
2. The **Sacral Chakra**, located above the genital area just below the navel, is related to bioenergy in the **Adrenal Medulla**, which stimulates the immune system with the adrenocorticotrophic hormone.
Gold - Healing energy is emanating from an area which is already vital and healthy. This excess of healing energy projects outward to contribute healthy and healing energy to the environment, and other people, animals, plants and objects which come in contact with this bioenergy.
3. The **Solar Plexus Chakra**, located around the navel, is related to the bioenergy in the **Islet of the Pancreas**, which stimulates the nervous system with insulin.
Gold - Healing energy is emanating from an area which is already vital and healthy. This excess of healing energy projects outward to contribute healthy and healing energy to the environment, and other people, animals, plants and objects which come in contact with this bioenergy.
4. The **Heart Chakra**, located at the centre of the chest in the heart area, is related to bioenergy in the **Adrenal Cortex** and the **Thyroid**, which stimulates biological manifestations of emotion with thyroxine, and the **Anterior Pituitary**, which triggers hormone secretion in the whole endocrine system.
Gold - Healing energy is emanating from an area which is already vital and healthy. This excess of healing energy projects outward to contribute healthy and healing energy to the environment, and other people, animals, plants and objects which come in contact with this bioenergy.
5. The **Throat Chakra**, located at the centre of the throat, is related to bioenergy in the **Thyroid and Parathyroid glands**.
Gold - Healing energy is emanating from an area which is already vital and healthy. This excess of healing energy projects outward to contribute healthy and healing energy to the environment, and other people, animals, plants and objects which come in contact with this bioenergy.
6. The **Third Eye Chakra**, located on the centre of the forehead between the eyebrows, is related to bioenergy in the **Pineal Body** of the brain, both an electromagnetic sensory organ and a gland which produces melatonin.
Red - Biological malfunction or physical damage. May also indicate a pain response or pain sensation in the area of the bioenergy, with or without actual malfunction or damage. Generally unhealthy.
7. The **Crown Chakra**, located directly above the head, is related to bioenergy in the **Anterior Pituitary gland**, which controls the endocrine system.
Gold - Healing energy is emanating from an area which is already vital and healthy. This excess of

Equus College of Learning & Research

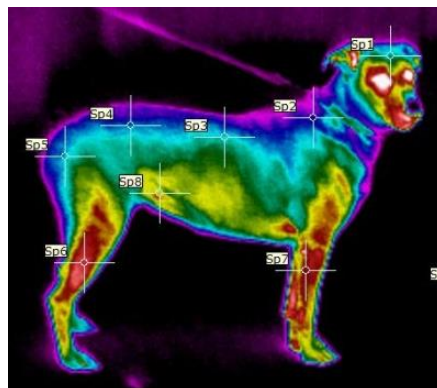
healing energy projects outward to contribute healthy and healing energy to the environment, and other people, animals, plants and objects which come in contact with this bioenergy.

EQUUS COLLEGE RESEARCH IS BASED ON

3 Thermography

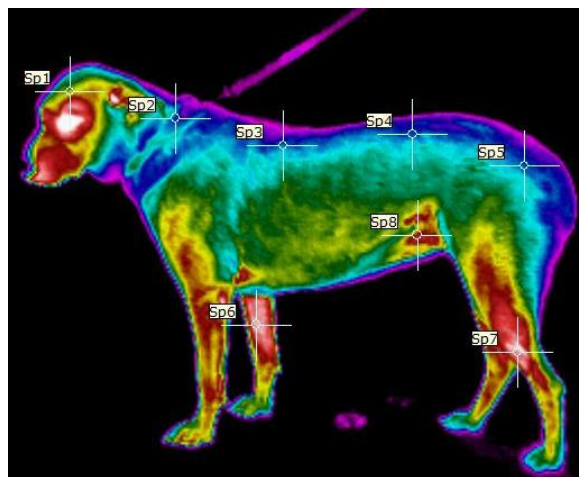
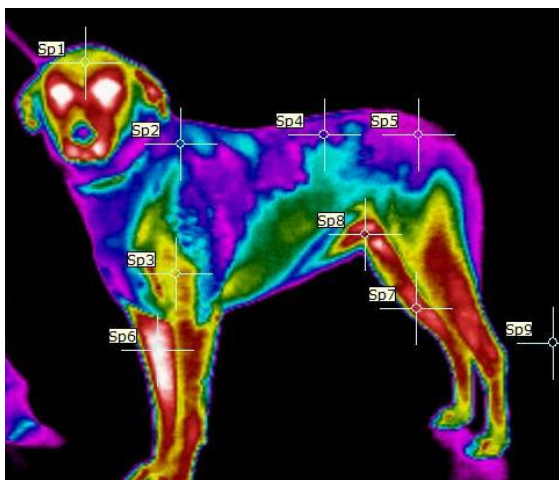


RHS Thermal imaging Day 1
Beauty's thermal images – showed a similar Pattern to the NEV imaging – distortions in heat patterning , areas of cold showing lack of blood and lymph flows –
Thermal imaging Day 6 – heat areas more evenly distributed throughout body



Day 1 LHS...irregular cold and hot spots.....

...Day 6 LHS hot and cold areas even out,



- Note legs have blood vessels close to surface so will always be at near body temperature



Ali and Raquel – take IR thermal images of Beauty pre treatments

OUTCOME OF COMBINED RESEARCH RX THERAPY

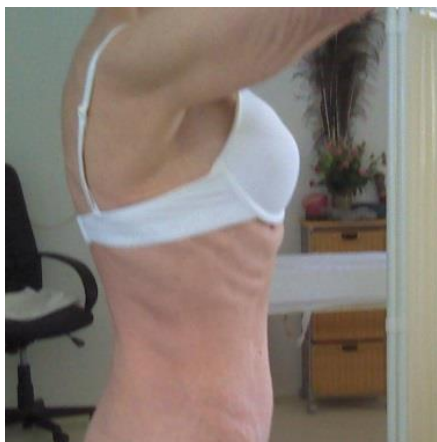
Having visual and frequency reading tools as in the IR, Digital, NEV and RFI readings all showed a marked improvement

1. cold & hot spot changes – much more evenly distributed
2. behavioural changes, - calmer friendlier manner
3. ROM changes – walked without limping and more freedom in movement through shoulders
4. Muscle tone changes – softer muscles no spasm felt post Rx
5. Coat changes – coat shiny and glossy with more fluidity in the fascia

Equus College of Learning & Research

6. Body Issues that have lasted a lifetime can be resolved with Bowen

Thermography is my main tool of verification for the human side the following digital and thermal images are of a patient who on initial assessment was discovered to have a 'sprung sacrum' leading to pressure on the coccygeal nerves creating painful inflammation, burning and peeling skin abrasions for the past 40 years.



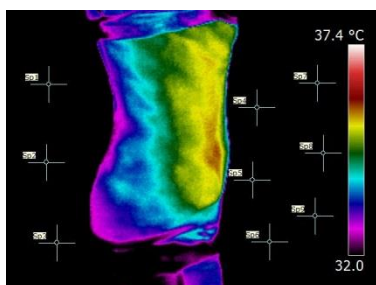
I treat her with the Essence of Bowen® on a 2-3 week basis; within in the first 3 treatments the burning coccyx and skin peeling had stopped, by Rx5 the sacrum had returned to its natural alignment. **The miracle that is this work** CONTINUED FOR HERthis week she told of how her ribs had stuck out at the intercostal margin all her life - a few nights ago she felt them and they were curved over as nature intended -

-see lateral views LHS and RHS Rx 5



e | 7

Before above Rx 5 & below 4



Rib cage Rx 4; note realigned Rx 7 year old sacral problem that had not been able to be addressed by her doctors but also realigned her costal margin [ribcage] that I had not picked up during my assessments and she had not thought worth telling me

After Rx 7

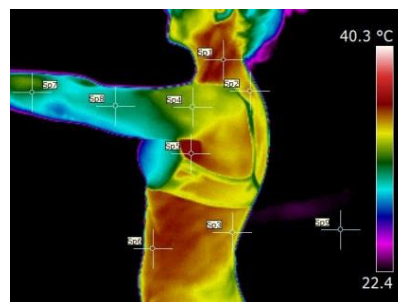
Bowen not only alleviated a 40



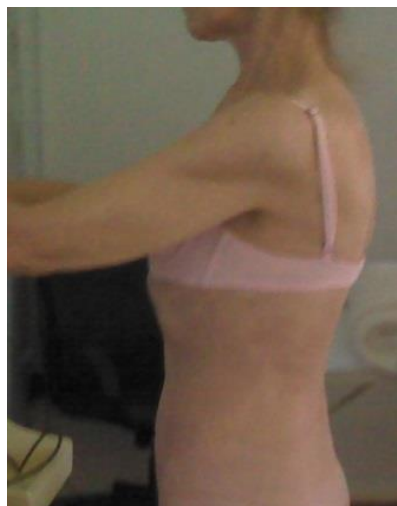
The thermography show inflammatory changes at session 7 as the skeletal



structure of the body is re-aligning – at the moment it is 'hot' as the bones, soft tissue and organs have to find a natural alignment these images are from the 5th and 7th sessions – session 5 the ribs out of alignment but by her 7th Rx there had been bony changes of the body and also organic marked by



the inflammation shown



Main treatment used to illicit these changes - BRMs of body balance. These moves I use for most of my treatments; – I have not used the respiratory or chest moves... yet - these gigantic bony changes in her skeleton have been effected basically by the Basic Body Balance of the 'Essence of Bowen®'



